

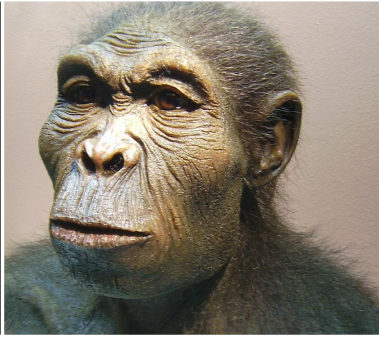
# EARLY ANCESTORS IMAGE SORT

Name:  Date:

**Directions:** Take a look at this set of images showing some of our early ancestors. Using your intuition and anything you've learned before, arrange the images in order, from our earliest ancestors to our own species, *Homo sapiens*. Don't worry about being completely accurate, just have some fun and make your best guess. This activity provides an opportunity to start thinking about human evolution and should be quick. After you have arranged the images, jot down everything you can think of that differentiates humans from our ancestors. Later in the lesson, you will have a chance to form a deeper understanding of how humans have evolved from our early ancestors..



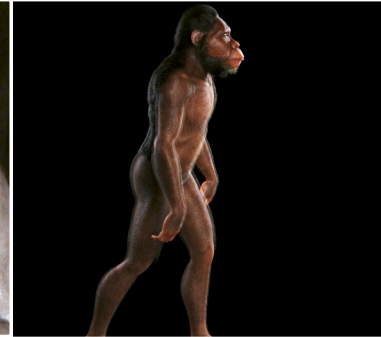
A. *Homo sapiens*



B. *Homo habilis*



C. *Neanderthal*



D. *Australopithecus*



E. *Homo erectus*

1. \_\_\_\_\_
2. \_\_\_\_\_
3. \_\_\_\_\_
4. \_\_\_\_\_
5. \_\_\_\_\_

